

Big thank-you

The following people have contributed greatly to the success of the past year's walks program, thank you to:

- All Leaders
- Kirsty McPhail for doing the job while I was away.
- Ute Foster for co-ordinating the Tuesday walks.
- Col Halpin for co-ordinating the Thursday bike rides.
- Margaret Waugh for helping with the bike ride reporting.
- And Myself, for IT Support - ☺

The Most Active Leader Award

The prize is decided on a points basis (½ a point for a day walk, 2 for a weekend trip and 3 for an extended trip).

In 2014-2015, The CMW Leader's Trophy was won by:

***** Matthew Stephenson - 30 points from leading 15 Trips *****

Thanks very much Matthew for putting on lots of overnight trips.

In second place we have:

**** Col Halpin - 28.5 points from leading 25 Trips ****

And third past the post we have:

*** Bas Slade - 23 points from leading 12 Trips ***

Thank-you to all our Leaders for 2014-15 – CMW would not exist without your efforts:

Leader	Points	Leader	Points	Leader	Points
MATTHEW STEPHENSON	30	ALAN DIXON	7.5	CRAIG AUSTIN	3
COLIN HALPIN	28.5	JEFF HOWARD	6.5	LISA McCARTHY	3
BASIL SLADE	23	BRUCE MCKINNEY	6	GEORGE QUINN	3
GEOFFREY JONES	23	JOHN L'ESTRANGE	5	KIRSTY McPHAIL	2.5
IAN OLSEN	21	MARGARET WAUGH	4.5	GWEN BEDNAL	2
DAVID CARMICHAEL	20	DAVID		MARK DABBS	2
WIL DE SAIN	20	SPRINGTHORPE	4	DAVID M BUSH	2
TREVOR CARR	13	ALF ZAWADZKI	3.5	LAURENCE DICKINSON	2
MEG MCKONE	12	GRAHAM MCLEAN	3.5	ROB JUNG	2
PETER OLIVER	10.5	STANISLAV KOS	3.5	CHU LIM-HALPIN	1.5
ANDREW THOMPSON	9	HESTER SLADE	3		
RAY ROBINSON	9	THERESE		IAN MELLER	1
LYNETTE ELSINGER	8.5	HORSINGTON	3	GREGORY CAVE	0.5
UTE FOSTER	8	SHARON FULCHER	3	GABRIELLA	
		ANDREW STONES	3	FURTENBACH	0.5
		IAN BRUCE	3	PHILIP LAMBE	0.5

CMW Annual Walks Report – 2014/15

Ten Leaders were responsible for **leading half the Club's trips** in the 12 months to Jun30 2015. See how this stacks up against previous years.

Year	2005-06	2006-07	2007-08	2008-09	2009-10	2010-11	2011-12	2012-13	2013-14	2014-15
Leaders	12	11	10	9	10	7	9	9	12	10

As always, we need more Leaders. To put on a trip, :

www.cmw.asn.au/submitwalk.html

The Most Active Walker Award

This award is a coveted trophy which is based on a points score representing the number of days spent walking, cycling, kayaking etc on Club Trips.

The **Most Active Walker** for 2014-2015 was (in a tight finish):

***** Col Halpin – 82 points from 50 trips *****

Well done, Col. Col also won this trophy last year and has done so many times.

And **Runner-Up** was:

**** Chu Lim-Halpin – 77 points from 47 trips ****

Third:

*** Ute Foster – 73 points from 46 trips ***

Those having 50 or more points:

Member	Points	Trips	Member	Points	Trips	Member	Points	Trips
COLIN HALPIN	82	50	WIL DE SAIN	62	14	CAROL DE SAIN	55	11
CHU LIM-HALPIN	77	47	BASIL SLADE	61	23	ROBERT STEWART	51	12
UTE FOSTER	73	46	LYNETTE ELSINGER	59	38			
ALAN DIXON	65	37	HESTER SLADE	57	21			

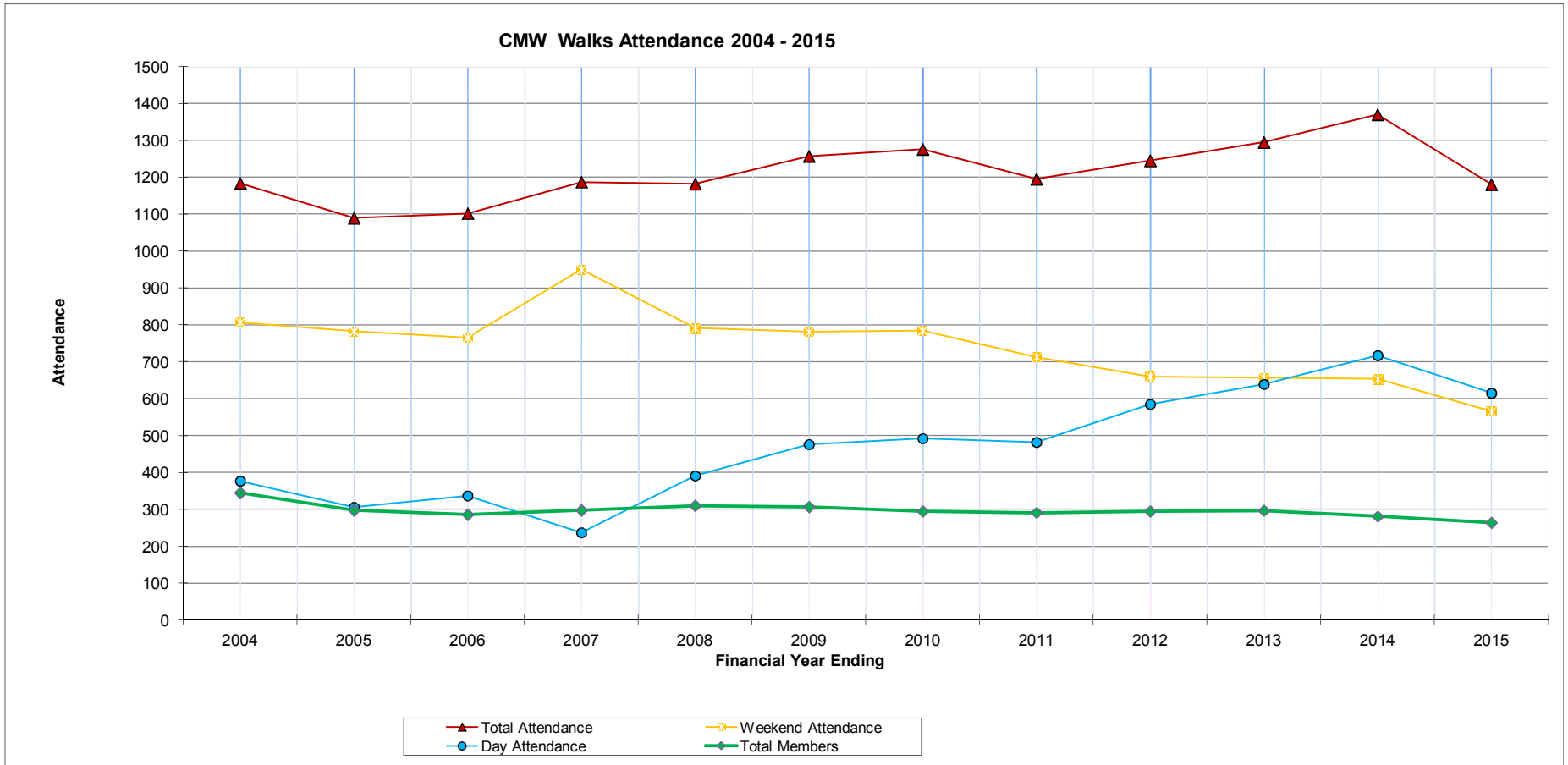
Other Members - Trip Results for FY 2015 - Overleaf

Member	Points	Trips
MEG MCKONE	49	6
ANDREW THOMPSON	48	21
RAY ROBINSON	47	8
ROB JUNG	43	8
GLENYS FITZPATRICK	43	8
DAVID M BUSH	40	13
HELEN ZIMMERMAN	40	12
GABRIELLA FURTENBACH	39	17
WILLIAM JACKSON	38	13
TREVOR CARR	37	10
BRUCE MCKINNEY	37	35
DAVID SPRINGTHORPE	37	18
GEOFFREY JONES	36	13
BARBARA WRIGHT	36	21
DAVID SWEETING	36	6
MARGARET COOPER	36	2
KIRSTY McPHAIL	35	20
FRANK MCKONE	35	2
MATTHEW STEPHENSON	34	17
PETER OLIVER	34	23
PHILIP LAMBE	32	21
DAWN JENNINGS	32	30
JOHN COOPER	32	1
SHIRLEY DANIELS	32	1
WARWICK DANIELS	32	1
DAVID CARMICHAEL	30	12
LAURENCE DICKINSON	29	15
JOHN SZPALINSKI	29	14
MARGARET WAUGH	28	27
SHARON FULCHER	27	4
IAN OLSEN	27	16
PERRIE FRANKS	26	3
GAY MCLEAN	26	18
ANNE WATSON	26	5
HENRY FOSTER	25	25
JANARDANAN MOHANDAS	24	2
MARGARET MOHANDAS	24	2
PAUL MCCANN	24	2
JOHN L'ESTRANGE	23	8
MARIANNE KRISTENSEN	23	11
SANFORD LARSON	23	12
ALAN OSLAND	23	9
MARY ROBINSON	23	5
STEVEN ROBINSON	23	5
GWEN BEDNAL	22	21

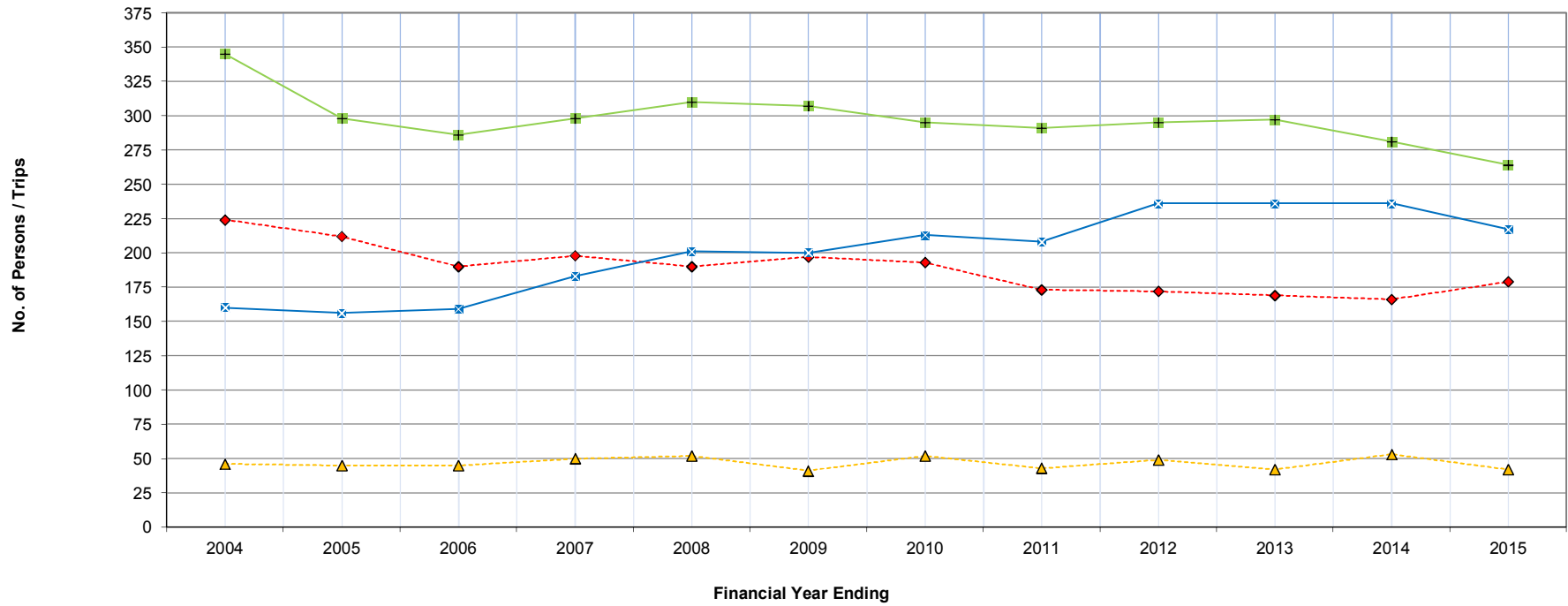
Member	Points	Trips
PETER MCKENDRY	7	3
KLAUS UMLAND	7	1
DAVID HUFTON	7	3
KAREN TAYLOR	6	4
KEITH MAXWELL	6	2
ROSE MAXWELL	6	2
LORRAINE HECKER	6	6
MARK DABBS	5	2
IAN ARMSTRONG	5	2
JUDI LEVINS	5	5
ELAINE PRIOR	5	3
WAYNE WOESSNER	4	2
SUE OLSEN	4	3
GARY JONES	4	2
DAVE KELLY	4	1
BRUCE BALDWIN	4	2
DAVID WILLIAMS	4	1
JANE MILLGATE	4	2
ALAN VIDLER	4	1
GORDON NEWELL	4	1
KIM HELLO	4	1
PAUL JENNINGS	4	2
SUE HAILSTONE	4	1
AGNIESZKA MOXON	4	1
GEOFF MOXON	4	1
SHANE HANSEN	4	1
GREGORY CAVE	3	2
RONALD HOWLETT	3	3
STEVE DEARDS	3	1
TOM HAYLLAR	3	1
JOHN GRAY	3	2
PHILLIP NANCE	3	3
KEVIN WILLIAMS	3	1
LYNN DABBS	3	1
GRAEME JESSUP	3	1
UNKNOWN	3	1
JOHN HORROCKS	3	1
MAGGIE BALDWIN	3	1
MAUREEN HORROCKS	3	1
PAUL MILLGATE	3	1
MARK FERNON	3	2
DANI ALFRED GENTLE	3	1
DAVID NABBS	2	1
GARRY CARR	2	1
LIZ GILL	2	2

SCOTT KREJZLIK	22	9	GABRIEL TELESKA	2	1
VANESSA FOLLETT	21	14	IAN SMITH	2	1
JAN GATENBY	20	2	SANDRA BERRY	2	1
PHILIP GATENBY	20	2	MERVYN LONG	2	2
MARY FOSTER	20	20	UNKNOWN2	2	1
LEA MAHER	18	6	SUE MCKENDRY	2	1
UNKNOWN	18	7	SIMON HUNTER	2	1
DAVID FREELAND	17	6	LORRAINE SIMPSON	2	2
MARIAN MOORE	17	7	CLAIRE WANICK	2	1
CRAIG AUSTIN	16	5	TOM JOSS	2	1
IAN MELLER	15	15	NAJEEB HASSAN	2	1
ANN MUNROE	15	4	BARRY KEELEY	2	1
DAVID SCRUSE	15	5	JILL BELL	2	1
STANISLAV KOS	14	10	JACKIE BESTEK	2	1
JAMES BLAIR	14	6	LINDA GROOM	2	1
ROBERT SIMON	14	6	PETER CONROY	2	1
CHRISTINE AUSTIN	14	3	BRETT CHATTERTON	2	1
ZIGGY ZURYNSKI	13	3	LOINA CROSS	2	1
SHANE HANSEN	13	6	STEPHANIE ROBERTSON	2	1
ALF ZAWADZKI	12	4	LINDA GRAY	2	1
GRAHAM MCLEAN	12	4	LINDA HIND	2	1
DUNCAN CROSS	12	6	TONY SWEETNAM	2	1
KEVAN DALY	12	5	PAUL CATER	2	2
RORY HENTSCHEL	12	4	HENRY CLIFFORD BURMES	1	1
ELAINE PRIOR	11	3	LAWRIE FAGGOTTER	1	1
SARA MAYWOOD	11	8	DESMOND LEVINS	1	1
GEORGE QUINN	10	1	JAYNE DANIELS	1	1
DONAL HUDSON	10	10	PAULA KERSLAKE	1	1
GRAEME HUNTER	10	1	SHAHRAM LANDARANI	1	1
IAN BRUCE	9	2	BRUCE STUCKEY	1	1
CAROL TOW	9	2	NEIL HICKSON	1	1
MICHELE POWELL	9	1	CATHERINE FLETCHER	1	1
OWEN KIMBERLEY	9	1	ROBERT SONNENSCHN	1	1
JEFF HOWARD	8	5	ANDREW TAYLOR	1	1
THERESE HORSINGTON	8	7	GEOFF MOORE	1	1
MARION DAVIES	8	2	DIANE HABERLEY	1	1
GREGORY LOVELL	8	4	SANDRA CAMACHO	1	1
LEN SHARP	8	4	HELEN ZAMMITT	1	1
LISA MCCARTHY	7	3	EDWARD GREEN	1	1
ANDREW STONES	7	1			

CMW Annual Trips Stats - 12 Years ending Jun 2015 - CHARTS



CMW Membership STATS 2004-2015



Number of Members Number on one or more walks No. of Leaders Number of Trips

CMW - Age Analysis - Last 16 Years

Year	Leaders	Top 50 Walkers	Active Walkers	Club Members	Prospective Members
2014/2015	64	64	61	63	51
2013/2014	64	63	61	62	56
2012/2013	62	62	57	61	51
2011/2012	62	60	58	61	45
2010/2011	62	60	58	60	51
2009/2010	59	59	57	59	51
2008/2009	59	58	55	58	50
2007/2008	58	60	55	57	45
2006/2007	58	57	54	57	43
2005/2006	58	56	55	56	45
2004/2005	56	55	52	55	43
2003/2004	54	54	53	54	47
2002/2003	51	54	52	53	46
2001/2002	50	52	52	52	46
2000/2001	50	53	50	52	45
1999/2000	49	52	48	51	43

Observation: It's (still) never too old to be a Leader

CMW Trips Stats - last 12 Years

	2004	2005	2006	2007	2008	2009	2010	2011	2012	2013	2014	2015
Walks Planned.	210	201	201	210	241	245	265	270	321	332	284	256
Walks Out.	160	156	159	183	201	200	213	208	236	236	236	217
% Walks Out	76.2	77.61	79.1	87.14	83.4	81.63	80.38	77.04	73.52	71.08	83.1	84.77
Weekend Walks	113	113	111	142	130	124	125	116	117	114	115	105
Day Walks	47	43	48	41	71	76	88	92	119	122	121	112
Total Attendance	1184	1089	1102	1187	1182	1257	1276	1195	1245	1295	1370	1180
Weekend Attendance	807	783	765	950	791	781	784	713	660	656	653	565
Day Attendance	377	306	337	237	391	476	492	482	585	639	717	615
% Weekend Attendance	68.16	71.9	69.42	80.03	66.92	62.13	61.44	59.67	53.01	50.66	47.66	47.88
Average Weekend Party	7.1	6.9	6.9	6.7	6.1	6.3	6.3	6.1	5.6	5.8	5.7	5.4
Average Day Party	8	7.1	7	5.8	5.5	6.3	5.6	5.2	4.9	5.2	5.9	5.5
No. on one or more Walks (a)	224	212	190	198	190	197	193	173	172	169	166	179
(a) as a % of Members	64.93%	71.14%	66.43%	66.44%	61.29%	64.17%	65.42%	59.45%	58.31%	56.90%	59.07%	67.80%
No. needed for half attendance (b)	33	31	31	31	28	26	23	24	23	22	23	22
(b) as a % of Members	9.57%	10.40%	10.84%	10.40%	9.03%	8.47%	7.80%	8.25%	7.80%	7.41%	8.19%	8.33%
Number of Leaders (c)	46	45	45	50	52	41	52	43	49	42	53	42
(c) as a % of Members	13.33%	15.10%	15.73%	16.78%	16.77%	13.36%	17.63%	14.78%	16.61%	14.14%	18.86%	15.91%
Number of Members	345	298	286	298	310	307	295	291	295	297	281	264
Number of Extended Trips	44	41	49	45	43	46	50	39	39	50	61	54
Leaders responsible for half the trips	10	9	12	11	10	9	10	7	9	9	12	10

Jeff Howard - Walks Secretary

walks@cmw.asn.au